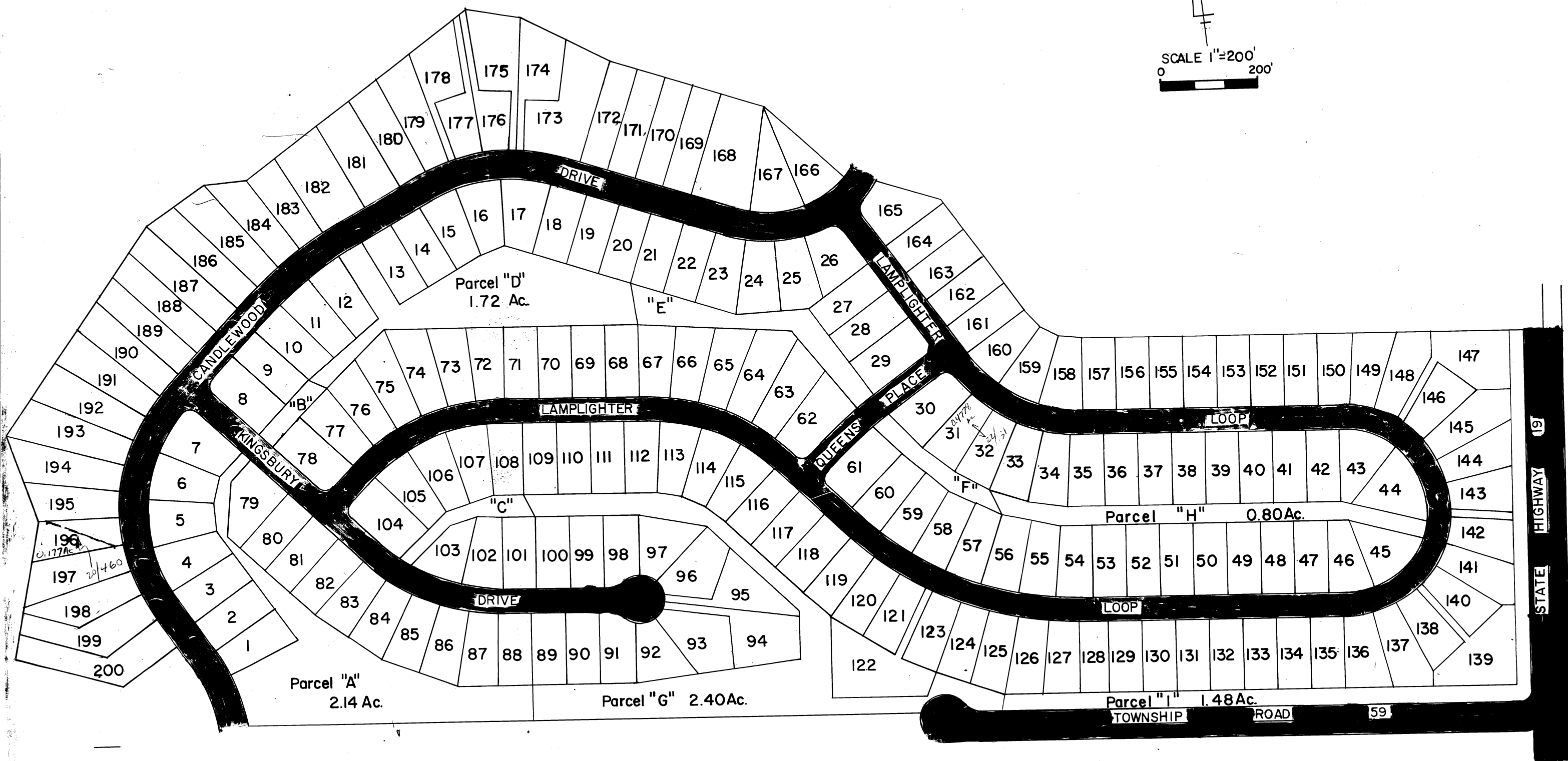
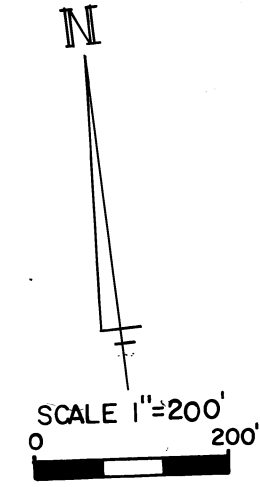


CANDLEWOOD LAKE UNIT I



"A"	2.14 Ac.
Parcel "B"	0.14 Ac.
"C"	0.23 Ac.
"E"	0.64 Ac.
"F"	0.26 Ac.
"G"	2.40 Ac.
"H"	0.80 Ac.
"I"	1.48 Ac.

NOTE:

Lots 1-40	See page	I-A
Lots 41-80	"	I-B
Lots 81-120	"	I-C
Lots 121-160	"	I-D
Lots 161-200	"	I-E

Drawn By: *Robin J. Owen*
 Checked By: *Mike Edwards*